

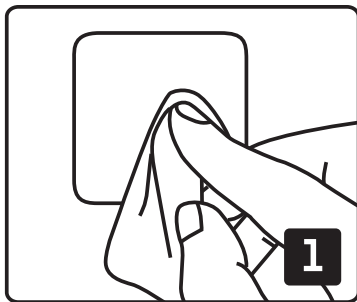
# copter<sup>®</sup> GREAT PROTECTION

## SMARTWATCH

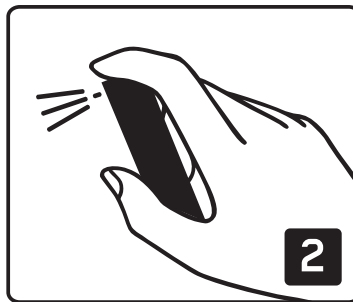
### FILM

#### Installation guide

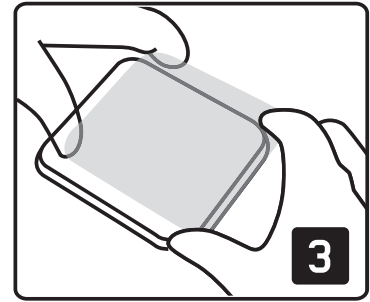
Before beginning, make sure to wash your hands thoroughly.



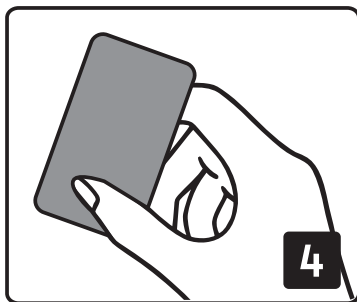
Clean your screen from dust and grease.



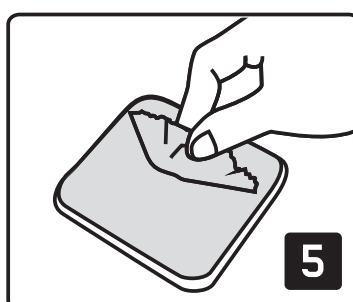
Spray your fingertips and both sides of the film. Mostly on the sticky side.



Apply the film to the screen with the sticky side down and drag it into the right position.



Use the scrape to remove any bubbles or liquid.



Dry off any excess moisture with the cloth. Any small bubbles will disappear within a few days.



Let the film dry before use.