

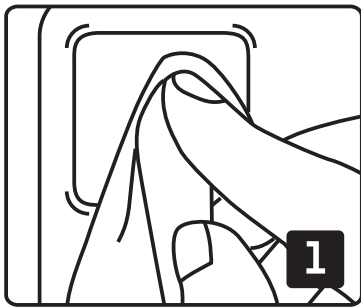
copter[®] GREAT PROTECTION

GLASS

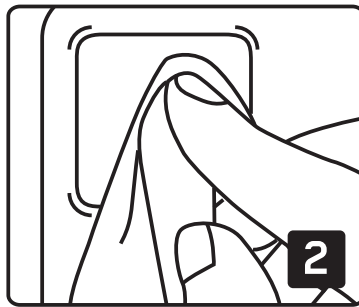
LENS RINGS

Installation guide

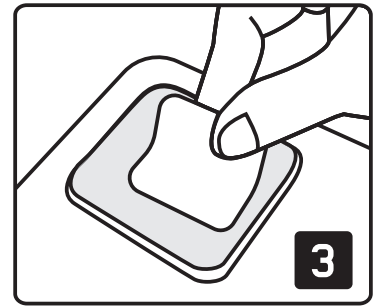
Before starting, make sure to wash your hands thoroughly.



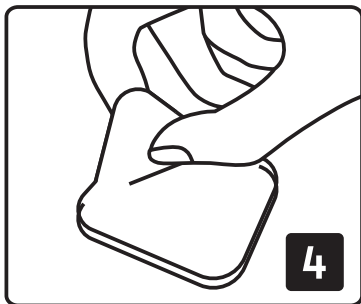
Use Cleaning kit paper towel 1 to clean the lens.



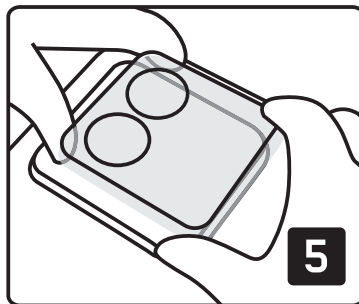
Use Cleaning kit paper towel 2 to dry the lens.



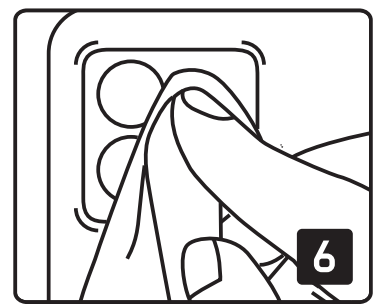
Remove remaining particles with Dust sticker.



Peel off the protective layer from the adhesive side of the glass.



Align the glass straight down over lens. Then gently remove mounting frame.



With the paper towel press gently and make sure the rings sit firm.