

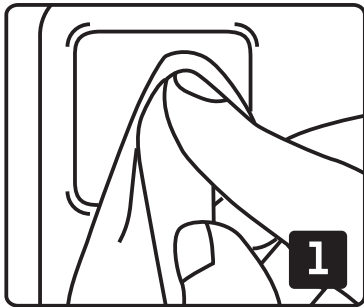
copter[®] GREAT PROTECTION

GLASS

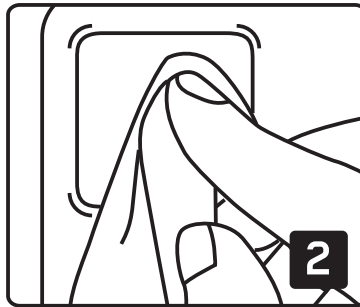
LENS

Installation guide

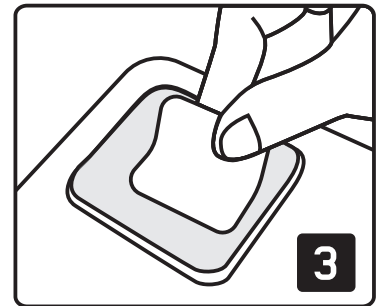
Before starting, make sure to wash your hands thoroughly.



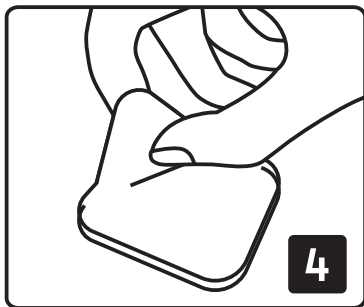
Use Cleaning kit paper towel 1 to clean the lens.



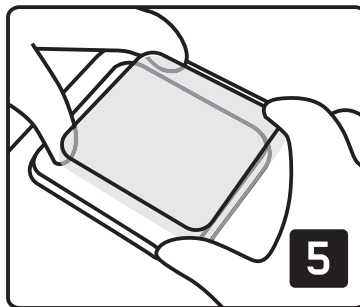
Use Cleaning kit paper towel 2 to dry the lens.



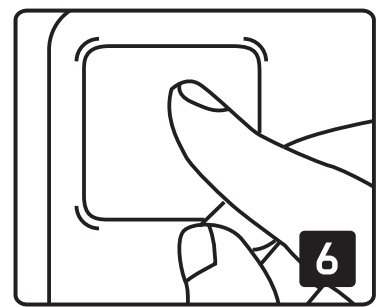
Remove remaining particles with Dust sticker.



Peel off the protective layer from the adhesive side of the glass.



Align the glass straight down over lens.



Gently press any air towards the edges.